

## نحوه اتصال به شبکه‌ی وایرلس با استفاده از اتصال PPPoe :


### نحوه‌ی اتصال در ویندوز XP

پس از اتصال وایرلس مراحل زیر جهت ایجاد کانکشن PPPoE صورت می‌گیرد (Windows XP):



**New Connection Wizard**

**Getting Ready**  
The wizard is preparing to set up your Internet connection.




How do you want to connect to the Internet?

- Choose from a list of Internet service providers (ISPs)**
- Set up my connection manually**  
For a dial-up connection, you will need your account name, password, and a phone number for your ISP. For a broadband account, you won't need a phone number.
- Use the CD I got from an ISP**

< Back   **Next >**   Cancel

**New Connection Wizard**

**Internet Connection**  
How do you want to connect to the Internet?



**Connect using a dial-up modem**  
This type of connection uses a modem and a regular or ISDN phone line.


**Connect using a broadband connection that requires a user name and password**  
This is a high-speed connection using either a DSL or cable modem. Your ISP may refer to this type of connection as PPPoE.

**Connect using a broadband connection that is always on**  
This is a high-speed connection using either a cable modem, DSL or LAN connection. It is always active, and doesn't require you to sign in.

< Back   **Next >**   Cancel

**New Connection Wizard**

**Connection Name**  
What is the name of the service that provides your Internet connection?



Type the name of your ISP in the following box.

ISP Name

UMZ

The name you type here will be the name of the connection you are creating.

< Back   **Next >**   Cancel

**New Connection Wizard**

**Internet Account Information**  
You will need an account name and password to sign in to your Internet account.



Type an ISP account name and password, then write down this information and store it in a safe place. (If you have forgotten an existing account name or password, contact your ISP.)

User name: user

Password: ●●●●●●●●

Confirm password: ●●●●●●●●

Use this account name and password when anyone connects to the Internet from this computer

Make this the default Internet connection

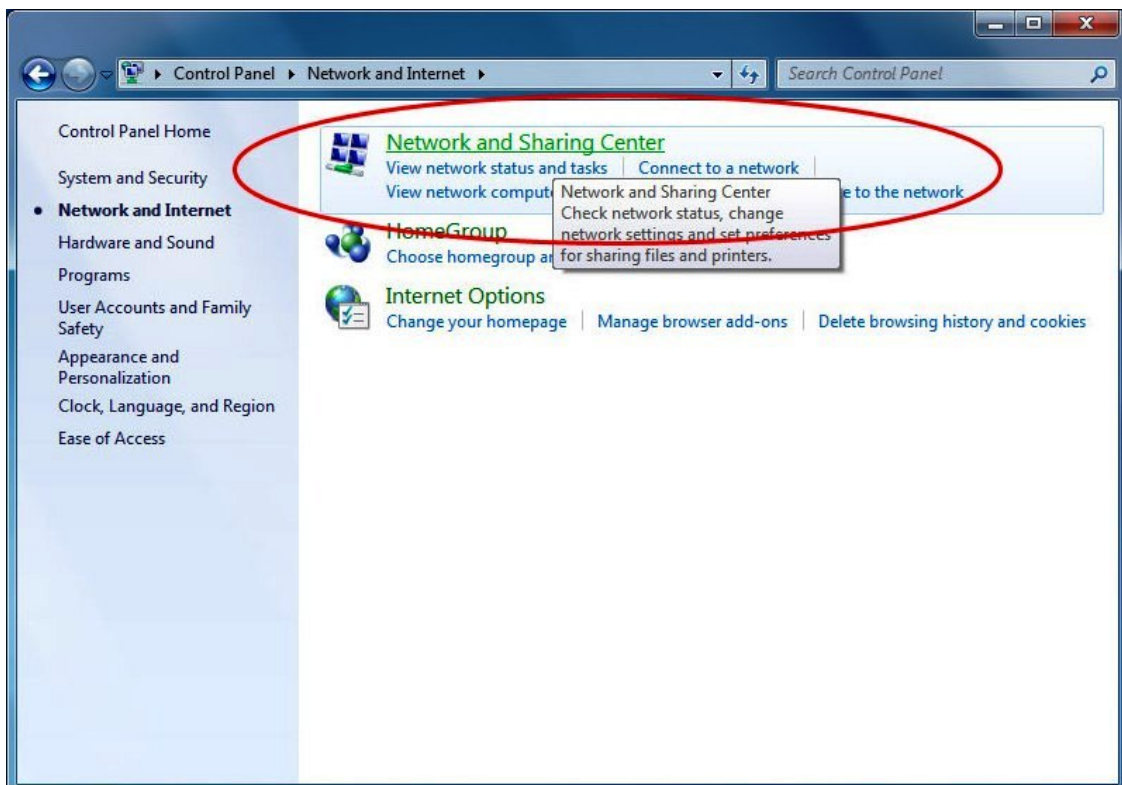
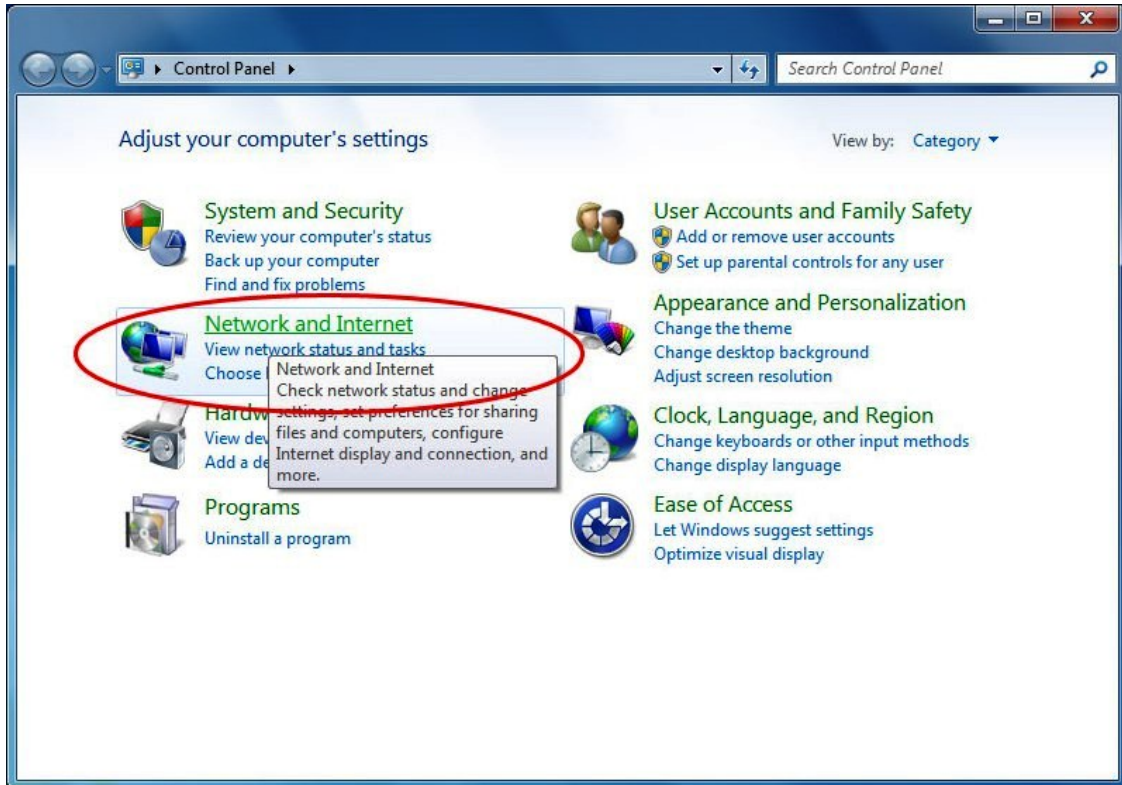
< Back   **Next >**   Cancel

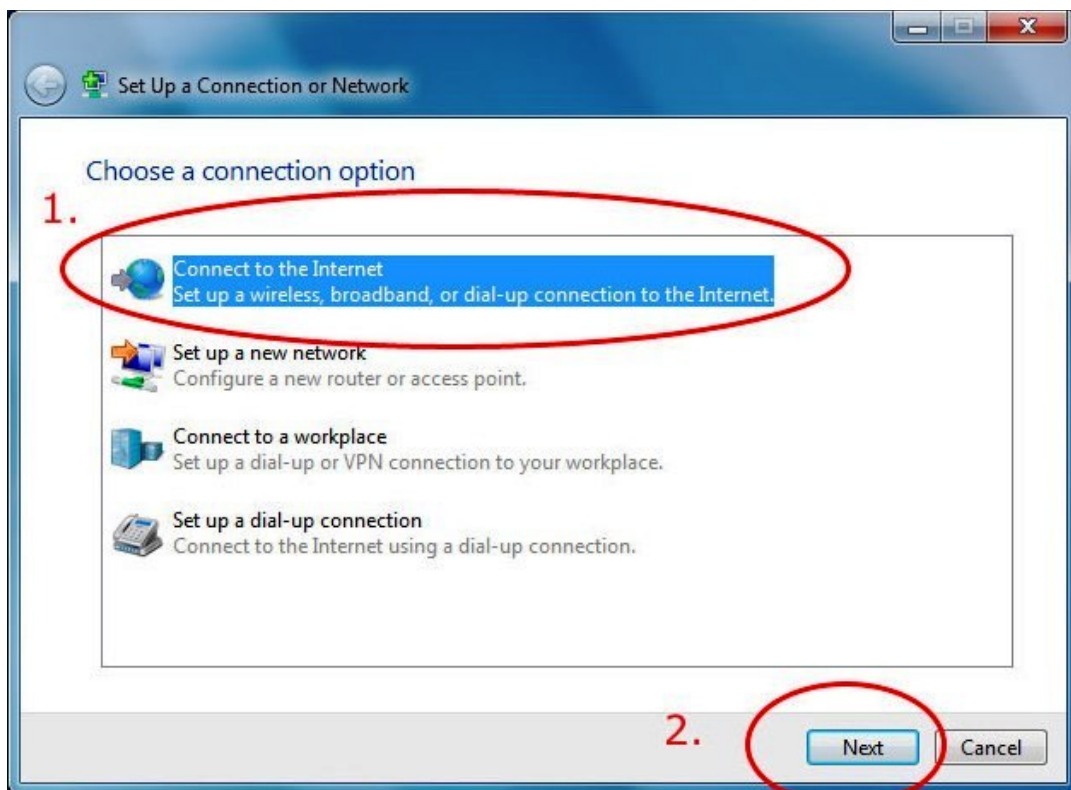
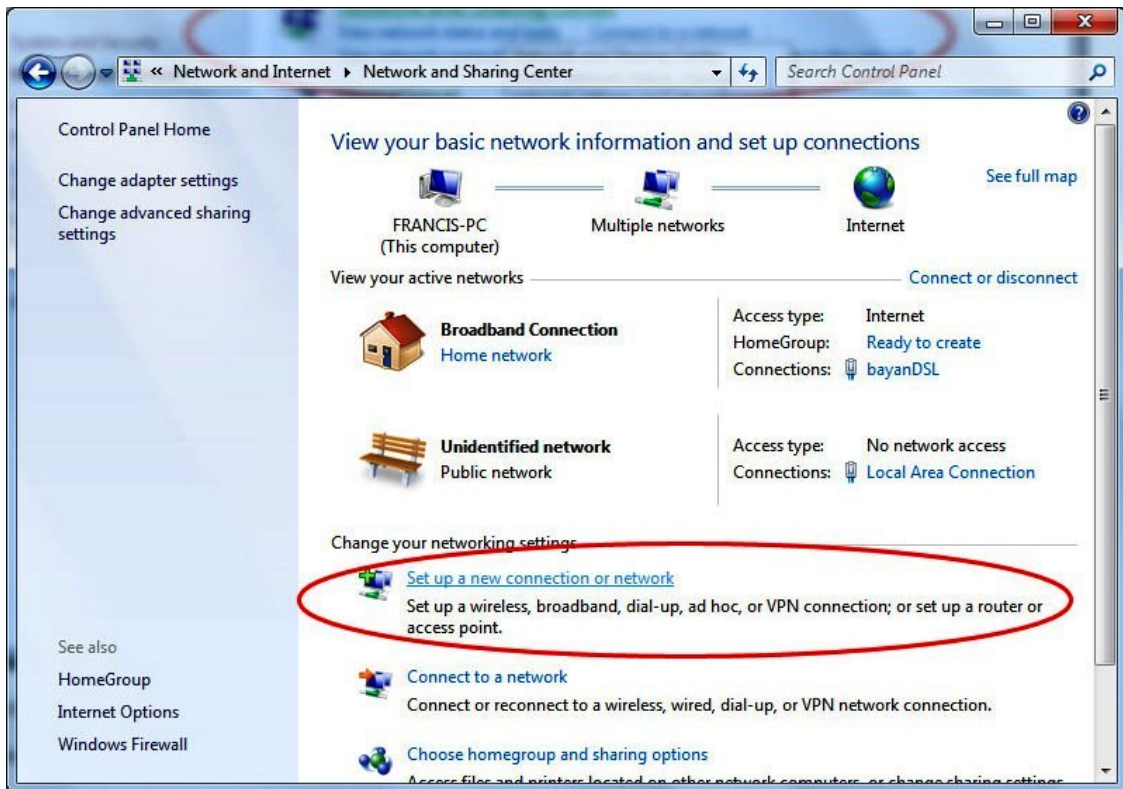


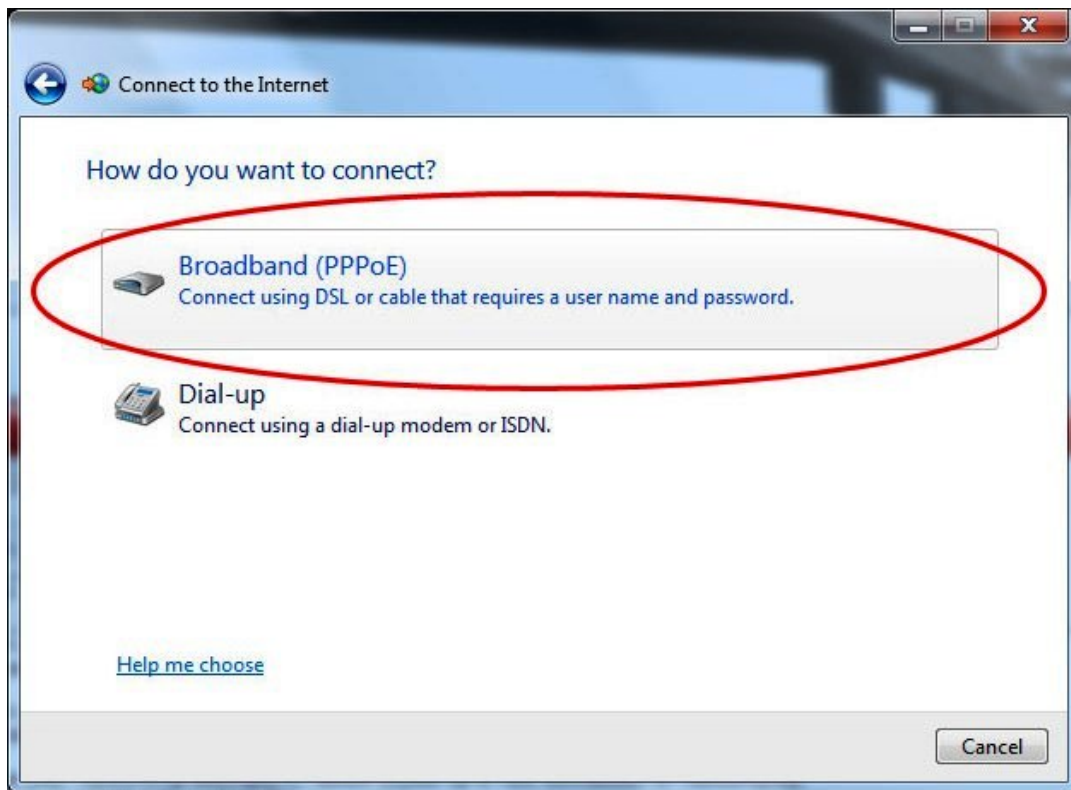
## نحوه اتصال به شبکه‌ی وایرلس با استفاده از اتصال PPPoE :

نحوه‌ی اتصال در ویندوز ۷

پس از اتصال وایرلس مراحل زیر جهت ایجاد کانکشن PPPoE صورت می‌گیرد (Windows 7):







Connect to the Internet

Type the information from your Internet service provider (ISP)

User name:

Password:  ←

**OPTIONAL STUFF:**  Show characters  
 Remember this password

Connection name:  ↑

**Optional too:**  Allow other people to use this connection  
This option allows anyone with access to this computer to use this connection.

[I don't have an ISP](#) Rename this to bayanDSL or any kind of name. Windows names it Broadband Connection by default.

Click this when you're finished filling up stuff above →

